



AccuValve Selection Matrix

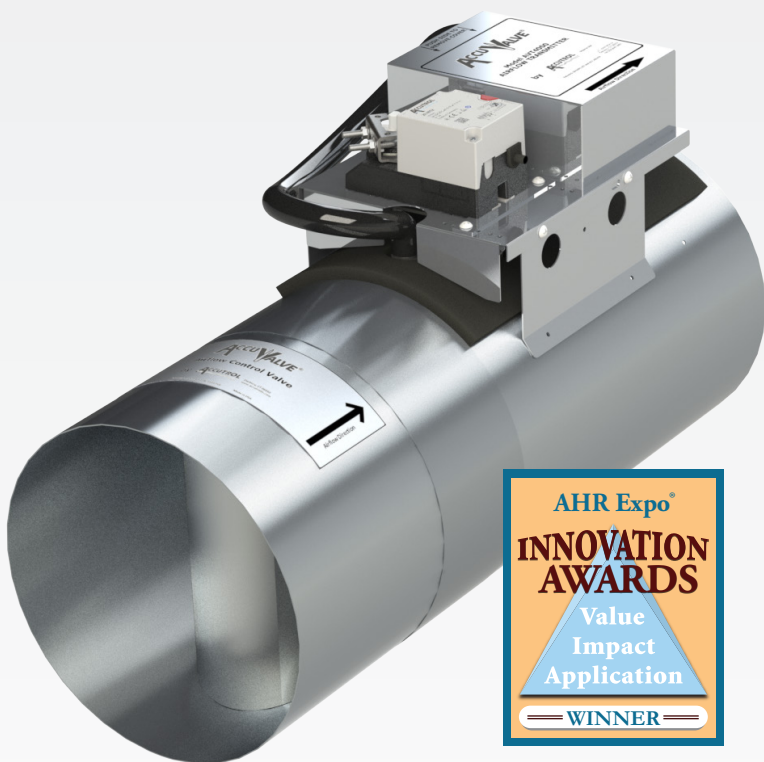


The Innovative AccuValve Delivers...

- Exceptionally low pressure drop
- Precise "true" airflow measurement
- No duct straight run requirements
- Linear control response
- High accuracy and turndown
- Can be mounted in any position
- ASHRAE Standard 90.1 compliant "ready"
- Intuitive graphical user interface
- Optional BACnet® MS/TP communication
- Optional Bluetooth configuration

Plus, the AccuValve AVC features...

- Electronic Pressure Independence
- Native BACnet® MS/TP



Manufactured in the USA.



Application	High Speed			Standard Speed			CAV
	AVR6000 (supply only)	AVC6000	AVT6000	AVR4000 (supply only)	AVC4000	AVT4000	AVC2000
University / Institutional							
Wet lab	✓	✓	✓				
Research	✓	✓	✓				
Teaching lab	✓	✓	✓				
Vivarium spaces	✓	✓	✓	✓	✓	✓	✓
Support areas	✓	✓	✓	✓	✓	✓	✓
Common area / Offices / Other	✓	✓	✓	✓	✓	✓	✓
Healthcare							
Operating rooms	✓	✓	✓	✓	✓	✓	
Isolation rooms	✓	✓	✓	✓	✓	✓	
Patient care (critical, nursing)	✓	✓	✓	✓	✓	✓	
Pharmacy	✓	✓	✓				
Common area / Offices / Other	✓	✓	✓	✓	✓	✓	✓
Offices / other with tracking pair	✓	✓	✓	✓	✓	✓	✓
Pharmaceutical							
Wet chemical research	✓	✓	✓				
Vivarium spaces	✓	✓	✓	✓	✓	✓	✓
Pharmaceutical clean rooms	✓	✓	✓				
Support areas	✓	✓	✓	✓	✓	✓	✓
Common area / Offices / Other	✓	✓	✓	✓	✓	✓	✓
Government							
Wet lab	✓	✓	✓				
Research	✓	✓	✓				
Vivarium spaces	✓	✓	✓	✓	✓	✓	✓
Support areas	✓	✓	✓	✓	✓	✓	✓
Common area / Offices / Other	✓	✓	✓	✓	✓	✓	✓
Petro							
Wet lab	✓	✓	✓				
Research	✓	✓	✓				
Support areas	✓	✓	✓	✓	✓	✓	✓
Common area / Offices / Other	✓	✓	✓	✓	✓	✓	✓

	AVR6000	AVC6000	AVT6000	AVR4000	AVC4000	AVT4000	AVC2000
Actuation type	High Speed	High Speed	High Speed	Standard Speed	Standard Speed	Standard Speed	Standard Speed
Integrated valve components	Room Temperature & Airflow Tracking Controller (supply only)	Airflow Controller	Transmitter & Actuator	Room Temperature & Airflow Tracking Controller (supply only)	Airflow Controller	Transmitter & Actuator	CAV Airflow Controller
Features							
Low pressure drop	✓	✓	✓	✓	✓	✓	✓
No straight run requirement	✓	✓	✓	✓	✓	✓	✓
True airflow measurement for feedback	✓	✓	✓	✓	✓	✓	✓
Linear control response	✓	✓	✓	✓	✓	✓	✓
High accuracy and turndown	✓	✓	✓	✓	✓	✓	✓
Not position sensitive	✓	✓	✓	✓	✓	✓	✓
No scheduled maintenance	✓	✓	✓	✓	✓	✓	✓
Includes Insight configuration software	✓	✓	✓	✓	✓	✓	✓
USB isolated "C" type com port	✓	✓	✓	✓	✓	✓	✓
Optional flanges	✓	✓	✓	✓	✓	✓	✓
Optional insulation	✓	✓	✓	✓	✓	✓	✓
Optional tight shut-off	✓	✓	✓	✓	✓	✓	✓
Power switch (allows configuration with no power)	✓	✓	✓				
Wireless bluetooth configuration option	✓	✓	✓	✓	✓	✓	
AccuNet capable	✓	✓	✓				
BACnet® MS/TP	standard	standard	optional	standard	standard	optional	
Analog inputs	3	3		3	1		
Two digital inputs	✓	✓		✓	✓		✓
Analog outputs	2	2	1	2	1	1	1
Alarm relay outputs	✓	✓					
Fume hood control mode		✓					
Compatible with Accutrol remote monitors		✓	✓				

	AVR6000	AVC6000	AVT6000	AVR4000	AVC4000	AVT4000	AVC2000
Actuation type	High Speed	High Speed	High Speed	Standard Speed	Standard Speed	Standard Speed	Standard Speed
Integrated valve components	Room Temperature & Airflow Tracking Controller (supply only)	Airflow Controller	Transmitter & Actuator	Room Temperature & Airflow Tracking Controller (supply only)	Airflow Controller	Transmitter & Actuator	CAV Airflow Controller
Warranty							
5-year	✓	✓	✓	✓	✓	✓	✓
Valve Sizes (in inches)							
Round valve sizes 6, 8, 10, 12, 14	✓	✓	✓	✓	✓	✓	✓
Rectangular valve sizes 12x18, 12x24	✓	✓	✓	✓	✓	✓	✓
Rectangular valve sizes 12x36, 12x48	✓	✓	✓				
Valve Material Types							
Aluminum	✓	✓	✓	✓	✓	✓	✓
304 stainless steel	✓	✓	✓	✓	✓	✓	✓
316 stainless steel	✓	✓	✓	✓	✓	✓	✓
High temperature stainless steel	✓	✓	✓				
PFA coated stainless steel		✓	✓				
Actuator Types							
Belimo, 2-sec full stroke, FLP, <1-sec ctrl. response	✓	✓	✓				
Belimo, 2-sec full stroke, FSP, <1-sec ctrl. response	✓	✓	✓				
Accutrol, 10-sec full stroke, FLP, <1-sec ctrl. response				✓	✓	✓	✓
Replaces Valve Model							
Previous Valve Model	—	AVC5000	AV3000, AVT3000	—	H-AVC5000	H-AV3000, H-AVT3000	AVC5000